



10 Hooper Close, Gloucester, GL4 4SU

Offers In The Region Of
£240,000

A very well presented semi-detached house located in Hooper Close, Gloucester. This property boasts a spacious 878 sq ft of living space, featuring one reception room, three spacious bedrooms, and a modern bathroom.

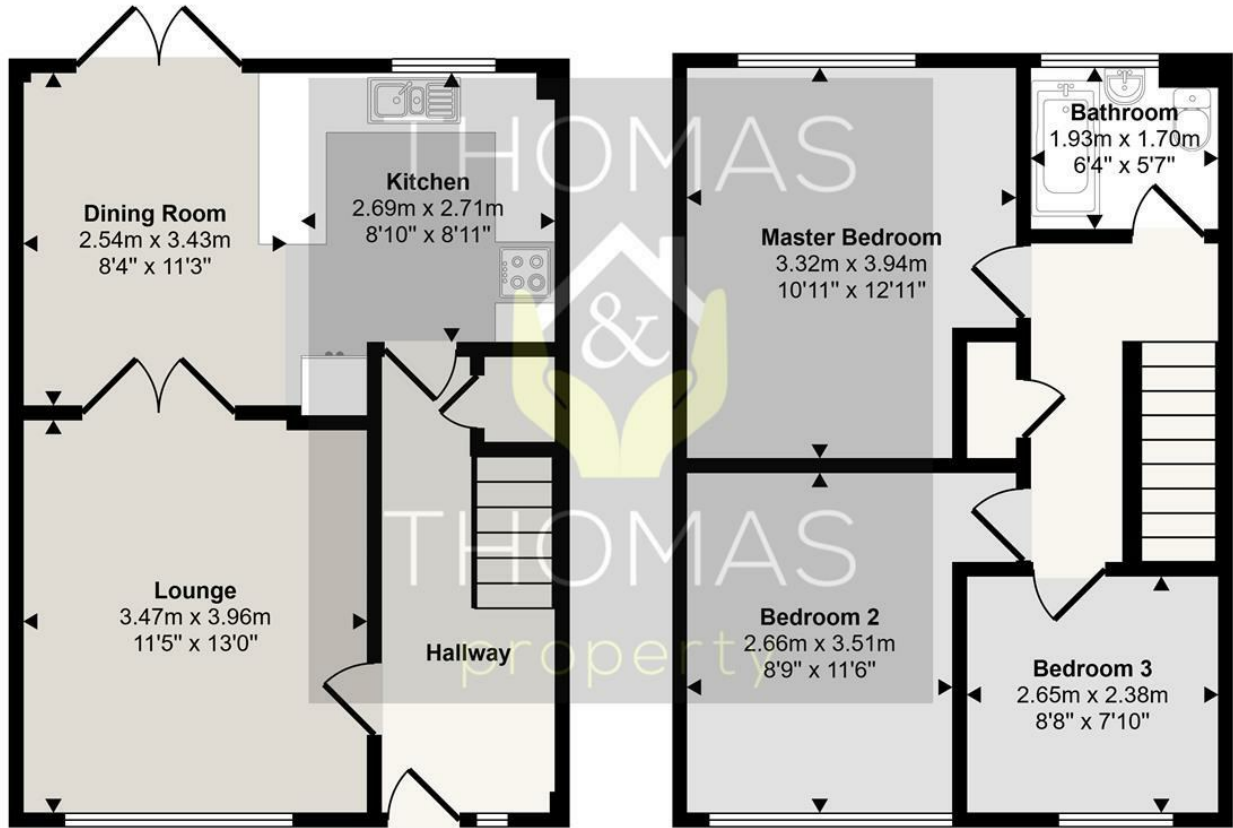
One of the highlights of this lovely home is the open plan kitchen, perfect for entertaining guests or enjoying family meals. The property is in excellent decorative order, ensuring a warm and inviting atmosphere throughout.

Convenience is key with parking available, a garage for additional storage, and the added bonus of overlooking an open green space.

Whether you're looking for a place to call home or an investment opportunity, this property offers both comfort and potential. Don't miss out on the chance to make this delightful house your own. Contact us today to arrange a viewing and experience the charm of Hooper Close for yourself.

- Three Bedrooms
- Very Well Presented
 - Garage
 - Parking
- Open Plan Kitchen/Diner
- Overlooking An Open Green

Approx Gross Internal Area
82 sq m / 878 sq ft



Ground Floor
Approx 40 sq m / 434 sq ft

First Floor
Approx 41 sq m / 444 sq ft

This floorplan is only for illustrative purposes and is not to scale. Measurements of rooms, doors, windows, and any items are approximate and no responsibility is taken for any error, omission or mis-statement. Icons of items such as bathroom suites are representations only and may not look like the real items. Made with Made Snappy 360.

Energy Efficiency Rating	
Current	Potential
	87
69	

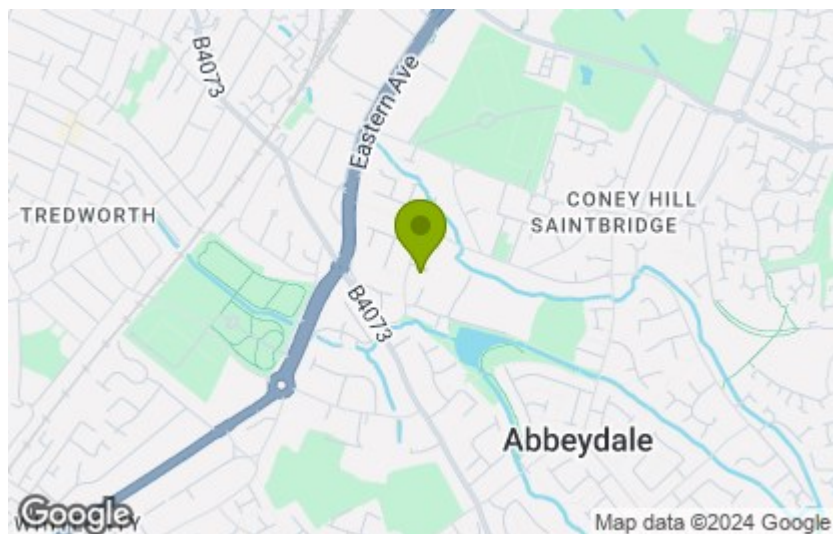
Energy Efficiency Rating	
Very energy efficient - lower running costs	Not energy efficient - higher running costs
(92 plus) A	
(81-91) B	
(69-80) C	
(55-68) D	
(39-54) E	
(21-38) F	
(1-20) G	

England & Wales EU Directive 2002/91/EC

Environmental Impact (CO ₂) Rating	
Current	Potential

Environmental Impact (CO ₂) Rating	
Very environmentally friendly - lower CO ₂ emissions	Not environmentally friendly - higher CO ₂ emissions
(92 plus) A	
(81-91) B	
(69-80) C	
(55-68) D	
(39-54) E	
(21-38) F	
(1-20) G	

England & Wales EU Directive 2002/91/EC



These particulars, whilst believed to be accurate are set out as a general outline only for guidance and do not constitute any part of an offer or contract. Intending purchasers should not rely on them as statements of representation of fact, but must satisfy themselves by inspection or otherwise as to their accuracy. No person in this firm's employment has the authority to make or give any representation or warranty in respect of the property.