



5 Dawn Drive, Gloucester, GL2 9BH

Offers Over £475,000

Thomas and Thomas are pleased to present this lovely family home situated in Longford and can be found down a private gated driveway.

Briefly comprising of: Entrance hall with WC under the stairs, kitchen / breakfast room with ample cupboard space and room for all appliances. There is a good sized lounge and separate dining room, which could also be used as a sun room, with features beams. The additional reception room is currently used as a 'snug' area.

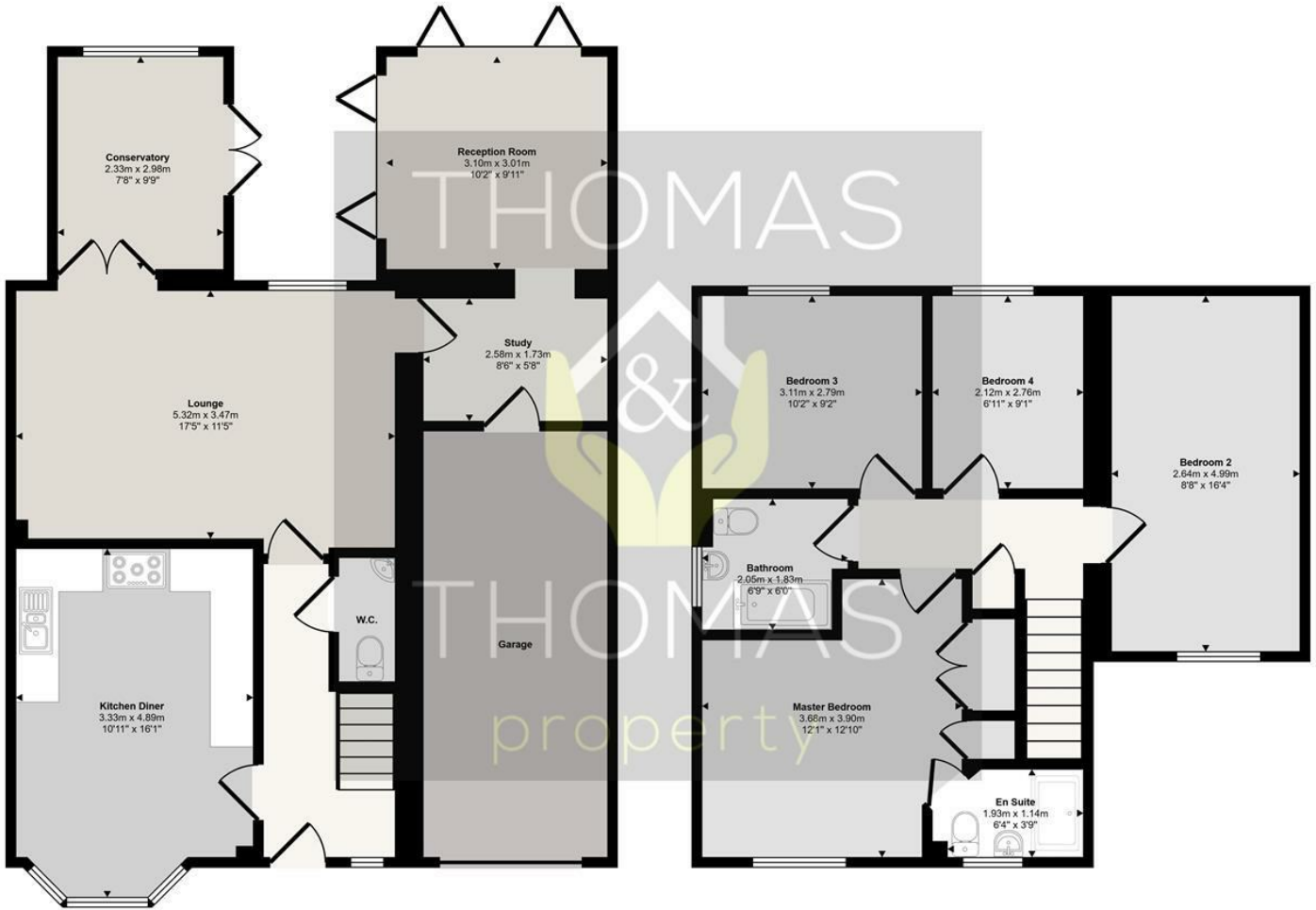
Upstairs there are three double bedrooms, the largest with an en suite shower room, single bedroom and family bathroom with shower over bath.

Outside is a private and enclosed garden with both a decking and grass area. To the front of the property is designated parking for three cars and a full sized garage.

This would make the ideal family home, close to local schools and amenities. Please call us today to arrange your viewing.

- Detached
- Four Bedrooms
- Private Gated Residence
- Garage & Off Road Parking
- En Suite & Family Bathroom
- Private Enclosed Garden

Approx Gross Internal Area
142 sq m / 1533 sq ft



This floorplan is only for illustrative purposes and is not to scale. Measurements of rooms, doors, windows, and any items are approximate and no responsibility is taken for any error, omission or mis-statement. Icons of items such as bathroom suites are representations only and may not look like the real items. Made with Made Snappy 360.

Energy Efficiency Rating		Current	Potential
Very energy efficient - lower running costs			
(92 plus) A			
(81-91) B			
(69-80) C			
(55-68) D			
(39-54) E			
(21-38) F			
(1-20) G			
Not energy efficient - higher running costs			
England & Wales	EU Directive 2002/91/EC		

Environmental Impact (CO ₂) Rating		Current	Potential
Very environmentally friendly - lower CO ₂ emissions			
(92 plus) A			
(81-91) B			
(69-80) C			
(55-68) D			
(39-54) E			
(21-38) F			
(1-20) G			
Not environmentally friendly - higher CO ₂ emissions			
England & Wales	EU Directive 2002/91/EC		



These particulars, whilst believed to be accurate are set out as a general outline only for guidance and do not constitute any part of an offer or contract. Intending purchasers should not rely on them as statements of representation of fact, but must satisfy themselves by inspection or otherwise as to their accuracy. No person in this firm's employment has the authority to make or give any representation or warranty in respect of the property.