



162 Thatcham Avenue Kingsway, Gloucester, GL2 2DA Asking Price £275,000

Welcome to Thatcham Avenue, Kingsway - a very versatile and spacious semi-detached modern house that boasts four bedrooms, two bathrooms, and a versatile three-storey accommodation. This property is perfect for those looking for a spacious home

As you step inside, you'll be greeted by a beautifully redecorated interior that is very well presented throughout. The property offers a generous reception room, ideal for entertaining guests or simply relaxing with your family.

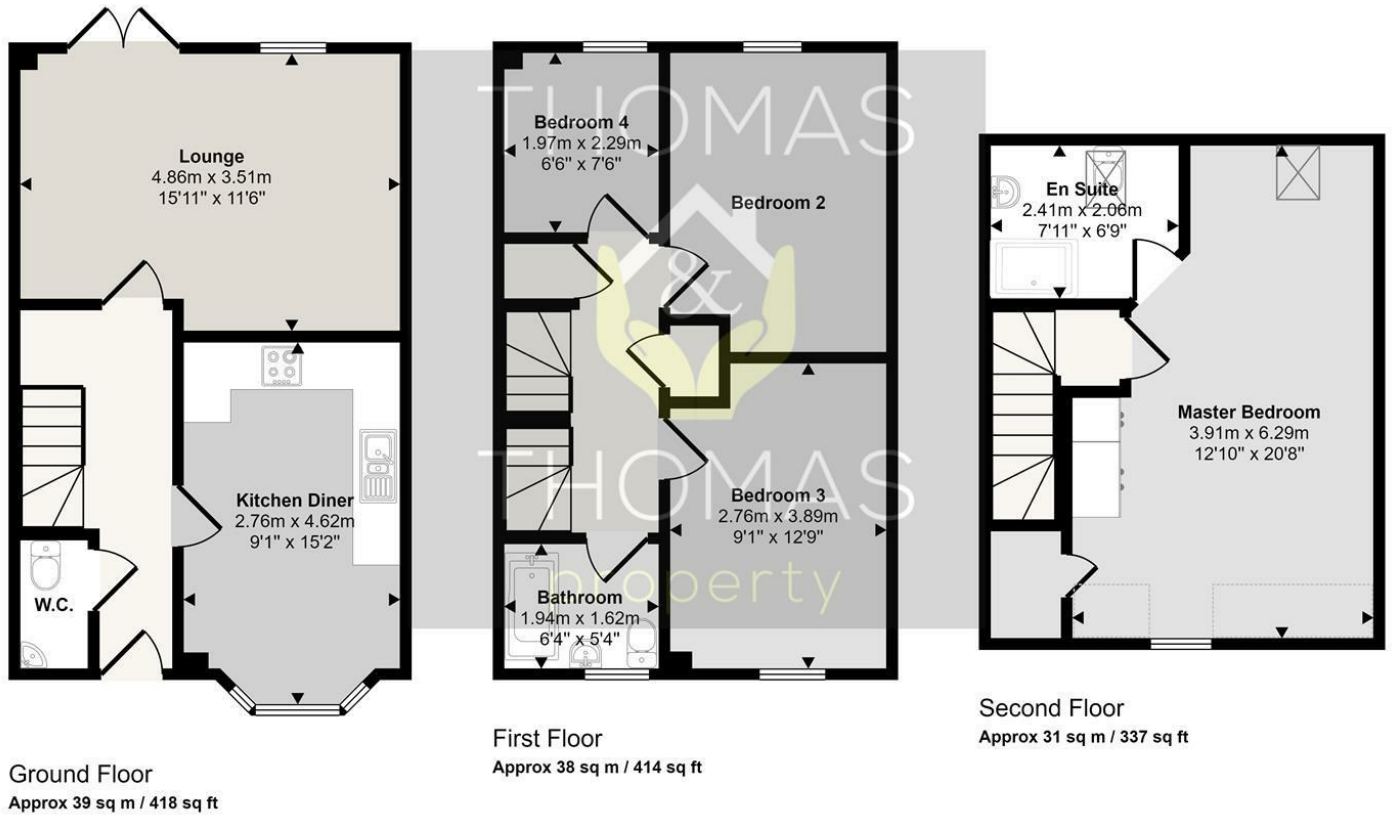
The four bedrooms provide plenty of space for a growing family or those in need of a home office. The two bathrooms ensure convenience and comfort for all residents.

The three-storey layout of the property offers a sense of privacy and separation between living spaces, making it a versatile and practical choice for any homeowner.

Don't miss out on the opportunity to make this wonderful property your new home. Contact us today to arrange a viewing and experience the charm of Thatcham Avenue for yourself.

- Four Bedrooms
 - En-Suite
- Re-decorated Throughout
 - Garage
- No Onward Chain

Approx Gross Internal Area
109 sq m / 1168 sq ft



☐ Denotes head height below 1.5m

This floorplan is only for illustrative purposes and is not to scale. Measurements of rooms, doors, windows, and any items are approximate and no responsibility is taken for any error, omission or mis-statement. Icons of items such as bathroom suites are representations only and may not look like the real items. Made with Made Snappy 360.

Energy Efficiency Rating	
Current	Potential
77	88

Very energy efficient - lower running costs

(92 plus) A
(81-91) B
(69-80) C
(55-68) D
(39-54) E
(21-38) F
(1-20) G

Not energy efficient - higher running costs

England & Wales EU Directive 2002/91/EC

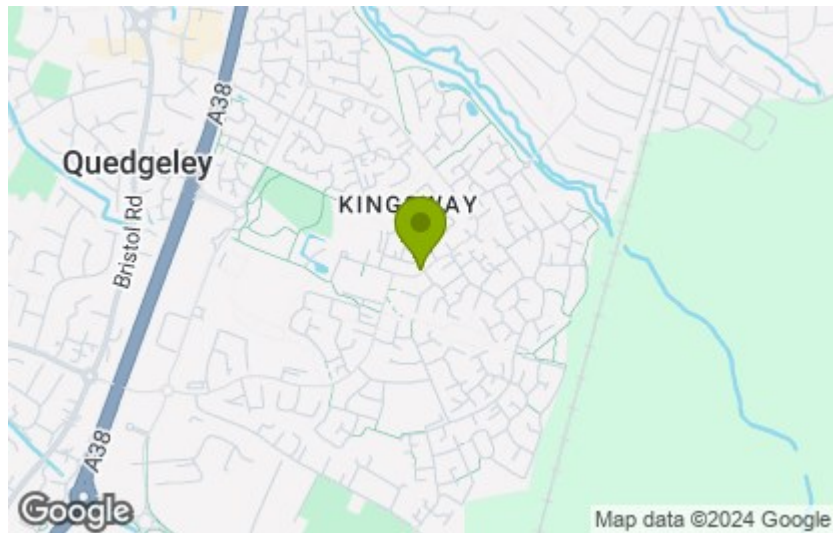
Environmental Impact (CO ₂) Rating	
Current	Potential

Very environmentally friendly - lower CO₂ emissions

(92 plus) A
(81-91) B
(69-80) C
(55-68) D
(39-54) E
(21-38) F
(1-20) G

Not environmentally friendly - higher CO₂ emissions

England & Wales EU Directive 2002/91/EC



These particulars, whilst believed to be accurate are set out as a general outline only for guidance and do not constitute any part of an offer or contract. Intending purchasers should not rely on them as statements of representation of fact, but must satisfy themselves by inspection or otherwise as to their accuracy. No person in this firm's employment has the authority to make or give any representation or warranty in respect of the property.